



**India Meteorological Department
(Ministry of Earth Sciences)**

BULLETIN NO. 2 (BOB/04/2022)

TIME OF ISSUE:1400 HOURS IST

DATED: 20.05.2022

FROM: INDIA METEOROLOGICAL DEPARTMENT (FAX NO. 24643965/24699216/24623220)

TO: CONTROL ROOM, NDM, MINISTRY OF HOME AFFAIRS (FAX.NO. 23093750)

CONTROL ROOM NDMA (FAX.NO. 26701729)

CABINET SECRETARIAT (FAX.NO.23012284, 23018638)

PS TO HON'BLE MINISTER FOR S & T AND EARTH SCIENCES (FAX NO.23316745)

SECRETARY, MOES (FAX NO. 24629777)

H.Q. (INTEGRATED DEFENCE STAFF AND CDS) (FAX NO. 23005137/23005147)

DIRECTOR GENERAL, DOORDARSHAN (23385843)

DIRECTOR GENERAL, AIR (23421105, 23421219)

PIB MOES (FAX NO. 23389042)

UNI (FAX NO. 23355841)

D.G. NATIONAL DISASTER RESPONSE FORCE (NDRF) (FAX NO. 26105912, 2436 3260)

DIRECTOR, PUNCTUALITY, INDIAN RAILWAYS (FAX NO. 23388503)

ADMINISTRATOR, ANDAMAN & NICOBAR ISLANDS (FAX NO. 03192- 232656)

CHIEF SECRETARY, TAMIL NADU (FAX NO 044-25672304)

CHIEF SECRETARY, PUDUCHERRY (FAX NO 0413-2334145)

CHIEF SECRETARY, ANDHRA PRADESH (FAX NO. 0863-2441029, 08645-246600)

CHIEF SECRETARY, ODISHA (FAX NO. 0674-2536660)

CHIEF SECRETARY, WEST BENGAL (FAX NO. 033-22144328)

Sub: Depression over Gulf of Martaban close to South Myanmar coast

The depression over Gulf of Martaban and adjoining Myanmar moved north-northeastwards with a speed of 8 kmph during last 03 hours and lay centered at 1130 hours IST of today, the 20th May, 2022 over Gulf of Martaban close to South Myanmar coast near latitude 16.4°N and longitude 97.4°E, about 20 km west-southwest of Mawlamyine (Myanmar), 140 km east-southeast of Yangon (Myanmar) and 720 km northeast of Port Blair (Andaman Islands).

It is very likely to move further north-northeastwards and cross south Myanmar coast around Mawlamyine during next few hours.

Warnings:

(i) Rainfall (warning graphics enclosed)

Light to moderate rainfall at most places with heavy rainfall at isolated places very likely over Andaman Islands during next 24 hours.

(ii) Wind warning

Squally wind speed reaching 45-55 kmph gusting to 65 kmph is very likely to prevail over Gulf of Martaban, adjoining North Andaman Sea and along & off South Myanmar coast during next 24 hours.

(iii) Sea condition

Sea condition is very likely to become rough to very rough over Gulf of Martaban, adjoining North Andaman Sea and along & off South Myanmar coast during next 24 hours.

(iv) Fishermen Warning (warning graphics enclosed)

- Fishermen are advised not to venture into Gulf of Martaban, adjoining North Andaman Sea Andaman and along & off South Myanmar coast during next 24 hours.

The system is under continuous surveillance and the next message will be issued at 1730 hours IST of today, the 20th May, 2022.

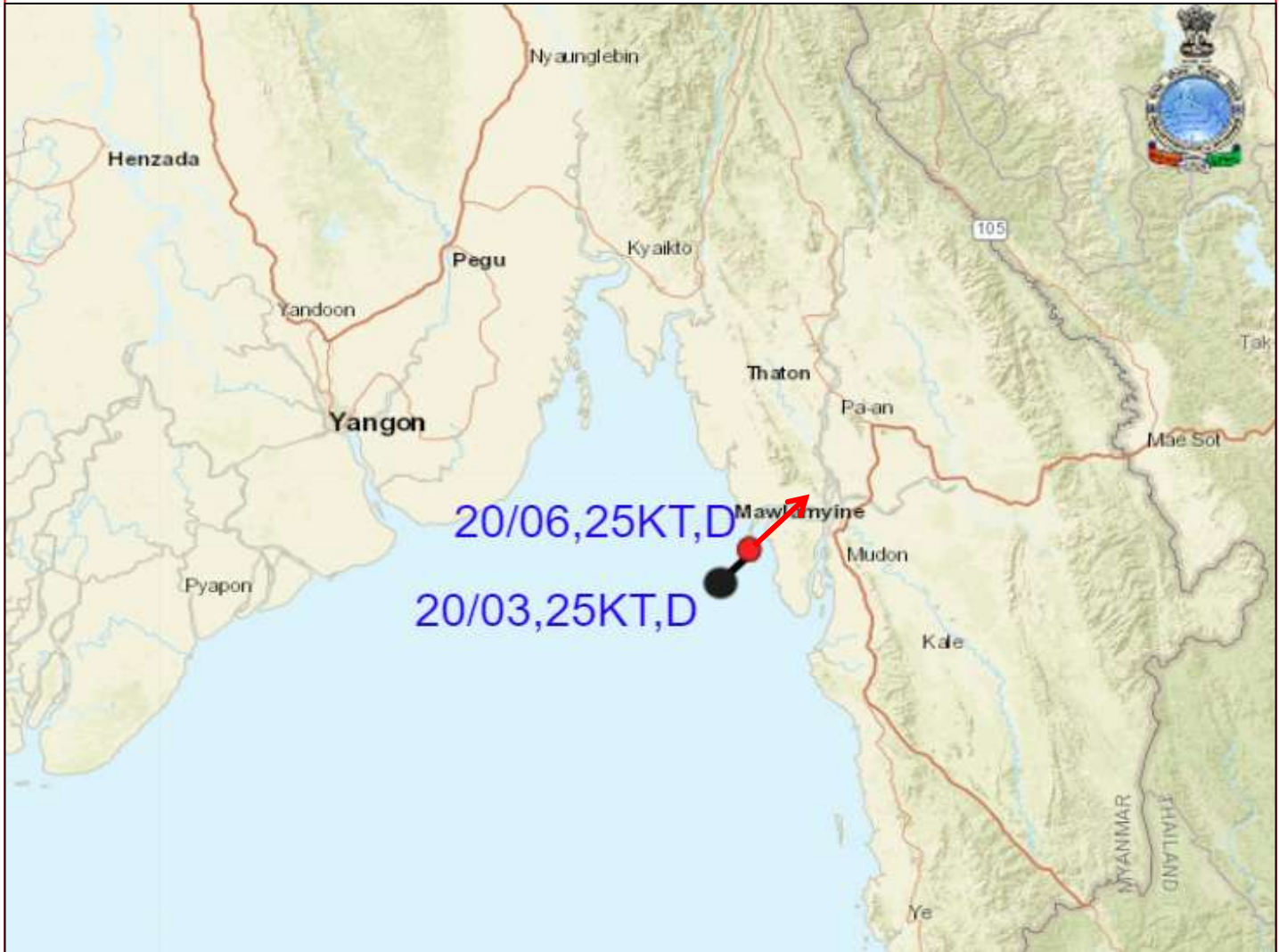
(M. Sharma)
Scientist-D, RSMC, New Delhi

Copy to: ACWC Kolkata/ ACWC Chennai/ CWC Bhubaneswar/CWC Vishakhapatnam/MO Port Blair

LEGEND: Heavy Rainfall: 64.5 to 115.5mm, **Very Heavy Rainfall:** 115.6 to 204.4mm **Most Places:** more than 76% of total stations, **Isolated Places:** Less than 25% of total



FORECAST TRACK OF DEPRESSION OVER GULF OF MARTABAN CLOSE TO MYANMAR COAST BASED ON 0600 UTC OF 20th MAY 2022



DATE/TIME IN UTC
IST=UTC + 0530
L: LOW PRESSURE AREA
WML: WELL MARKED LOW PRESSURE AREA
D: DEPRESSION (17-27 KT)
DD: DEEP DEPRESSION (28-33 KT)
CS: CYCLONIC STORM (34-47 KT)
SCS: SEVERE CYCLONIC STORM (48-63KT)
VSCS: VERY SEVERE CYCLONIC STORM (64-89 KT)
ESCS: EXTREMELY SEVERE CYCLONIC STORM (90-119 KT)
SuCS: SUPER CYCLONIC STORM (\geq 120 KT)

-  LESS THAN 34 KT
-  34-47 KT
-  \geq 48 KT
-  OBSERVED TRACK
-  FORECAST TRACK
-  CONE OF UNCERTAINTY

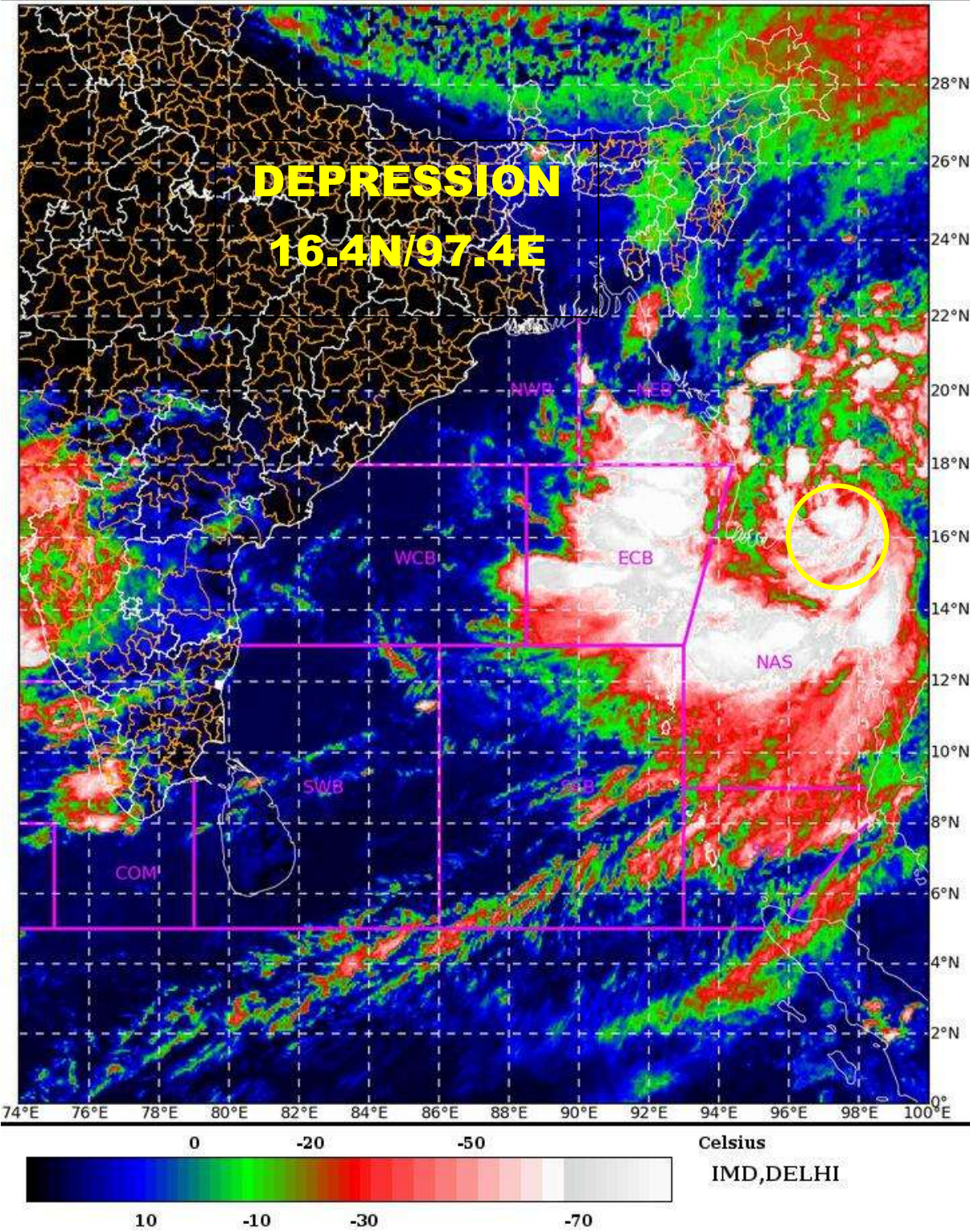
SAT : INSAT-3D IMG

20-05-2022/(0730 to 0756) GMT

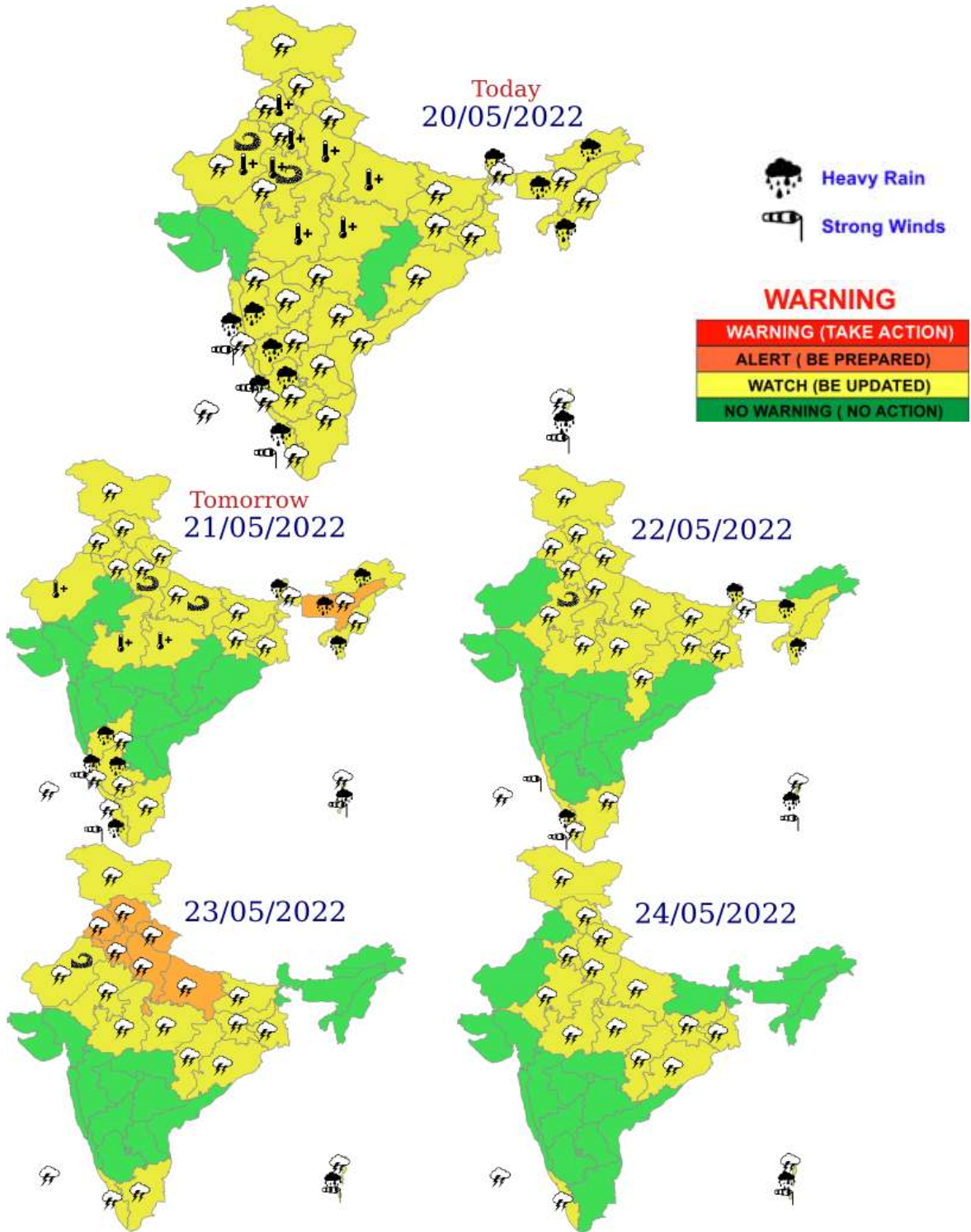
IMG_TIR1_TEMP 10.8 um

20-05-2022/(1300 to 1326) IST

L1C Mercator



Rainfall Warning Graphics



Fishermen Warning Graphics

INDIA METEOROLOGICAL DEPARTMENT FISHERMAN WARNING FOR BAY OF BENGAL AND ARABIAN SEA

